



DATA SHEET

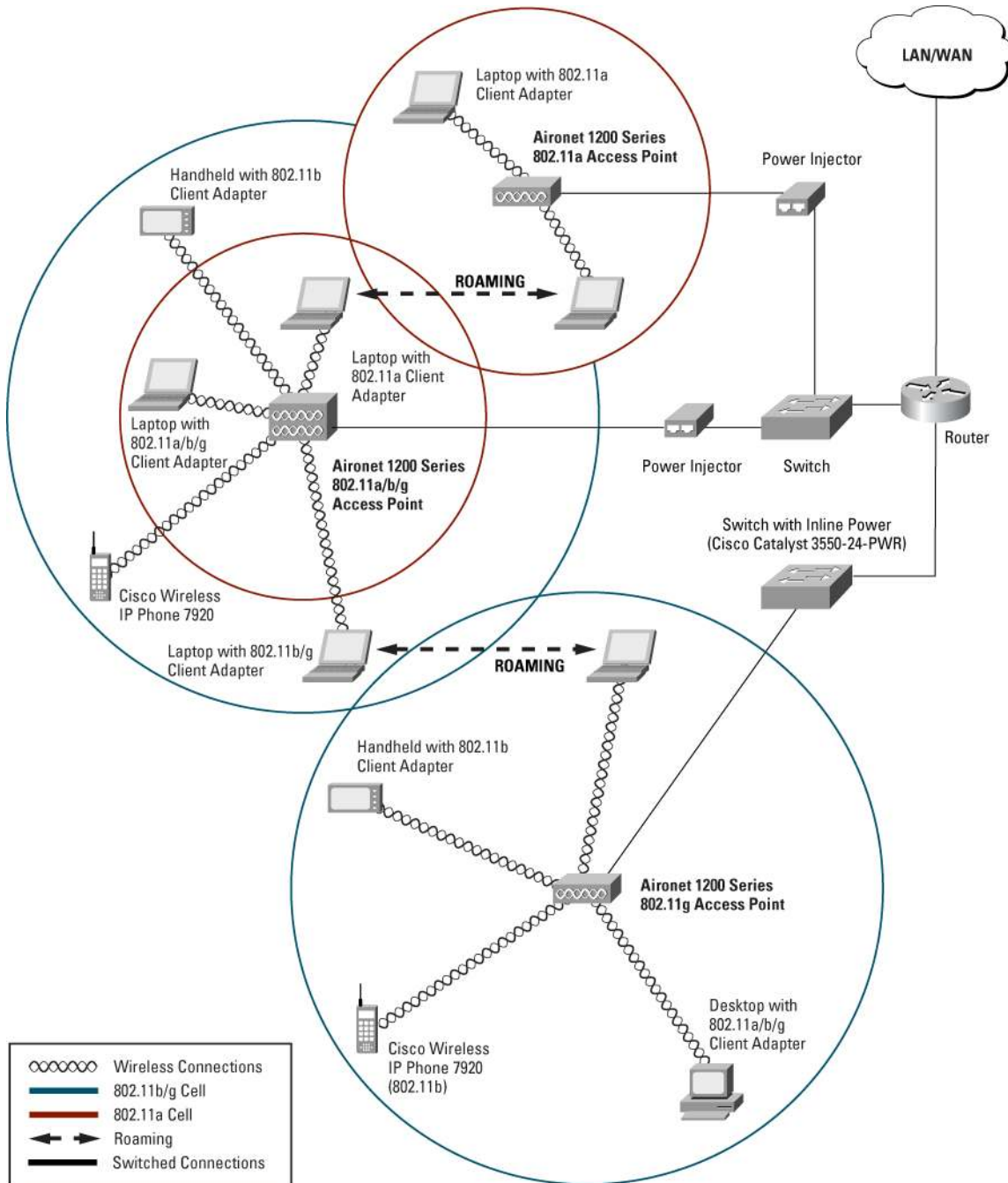
CISCO AIRONET 802.11A/B/G WIRELESS CARDBUS ADAPTER

PRODUCT OVERVIEW

The Cisco® Aironet® IEEE 802.11a/b/g Wireless CardBus Adapter provides high-performance 54 Mbps connectivity in the 2.4 and 5 GHz bands. Whether configured to support single 802.11b coverage, single 802.11g coverage, single 802.11a coverage, dual-mode 802.11a/g coverage or tri-mode 802.11a/b/g coverage, the Cisco Aironet 802.11a/b/g Wireless Cardbus Adapter is Wi-Fi compliant and combines the freedom of wireless connectivity with the performance, security, and manageability that businesses require (Figure 1).



Figure 1. Client devices equipped with Cisco Aironet 802.11a/b/g Wireless Cardbus Adapters can roam freely throughout a facility via communications with multiple IEEE 802.11a/b/g access points



Features include:

- Superior range and throughput
- Secure network communications, with the Cisco Wireless Security Suite and support for Wi-Fi Protected Access (WPA)
- Comprehensive utilities for flexible, easy configuration and management
- World mode for international roaming

ENTERPRISE-CLASS SECURITY SOLUTION

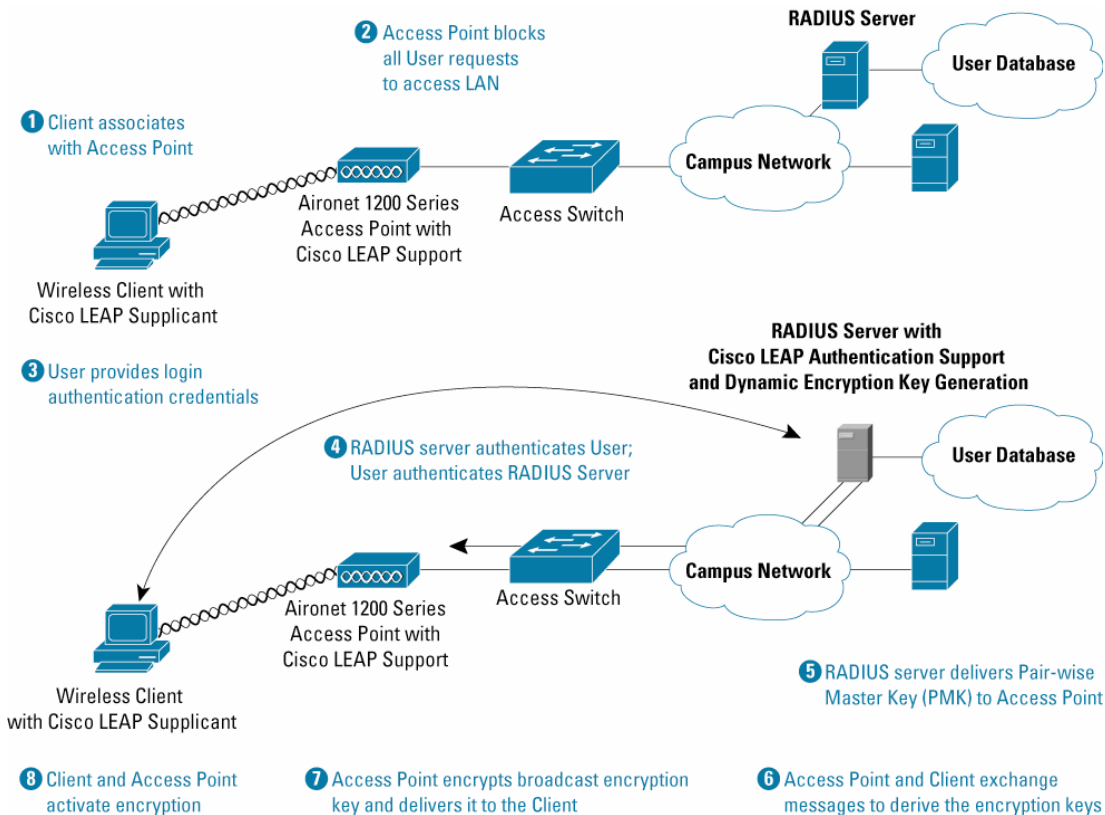
Designed with enterprise-class security requirements in mind, the Cisco Aironet 802.11a/b/g Wireless Cardbus Adapter is a key client-side component of the award-winning Cisco Wireless Security Suite. Based on the 802.1X standard for port-based network access, the Cisco Wireless Security Suite takes advantage of the Extensible Authentication Protocol (EAP) framework for user-based authentication (Figure 2). This solution also supports WPA, the Wi-Fi Alliance certification for interoperable, standards-based wireless LAN security.

The Cisco Aironet 802.11a/b/g Wireless Cardbus Adapter supports the most common 802.1X authentication types, including Cisco LEAP, Extensible Authentication Protocol Transport Layer Security (EAP-TLS), Protected Extensible Authentication Protocol-Generic Token Card (PEAP-GTC), and Protected Extensible Authentication Protocol-Microsoft Challenge Handshake Authentication Protocol Version 2 (PEAP-MSCHAP V2). A wide selection of RADIUS servers, such as the Cisco Secure Access Control Server (ACS) and Cisco Access Registrar (AR) server, can be used for enterprise-class centralized user management that includes:

- Strong, mutual authentication to ensure that only legitimate clients associate with legitimate and authorized network RADIUS servers via authorized access points
- Dynamic per-user, per-session encryption keys that automatically change on a configurable basis to protect the privacy of transmitted data
- Stronger encryption keys provided by Temporal Key Integrity Protocol (TKIP) enhancements such as message integrity check (MIC), per-packet keys via initialization vector hashing, and broadcast key rotation
- RADIUS accounting records for all authentication attempts
- Ready for IEEE 802.11i/WPA2 Advanced Encryption Standard (AES) support

For more information on wireless security, visit: <http://www.cisco.com/go/aironet/security>.

Figure 2. The Cisco Wireless Security Suite is an Enterprise-Class Security System Based on the 802.1X Architecture



CISCO STRUCTURED WIRELESS-AWARE NETWORK

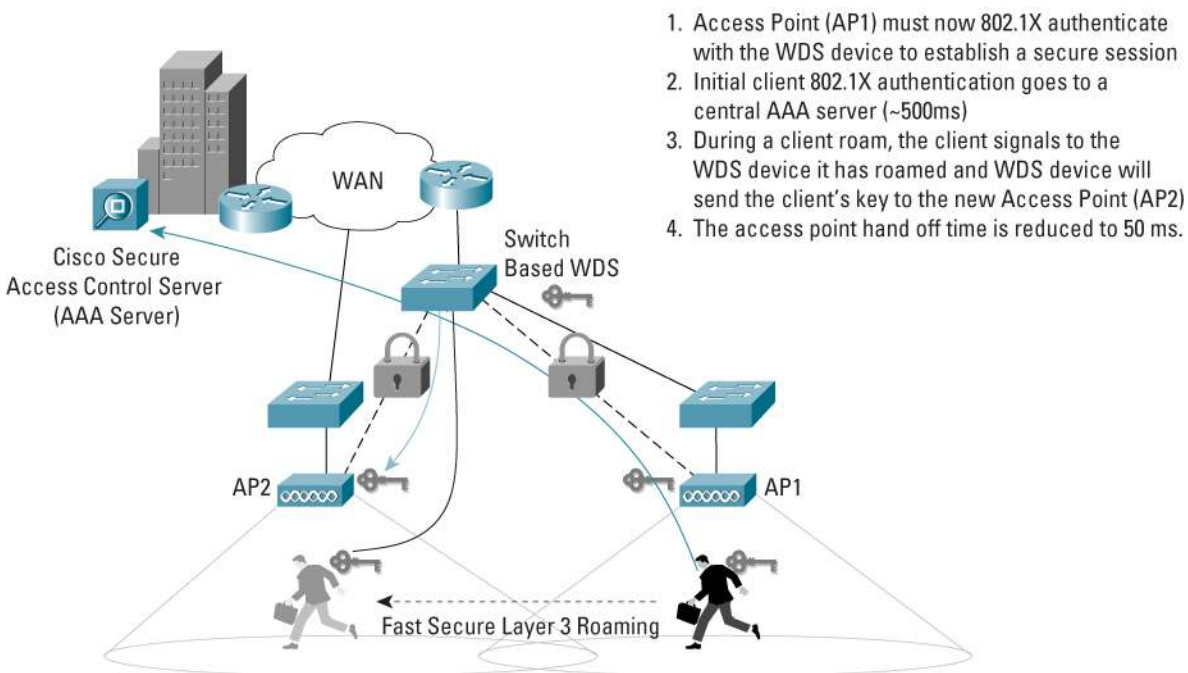
The Cisco Aironet 802.11a/b/g Wireless CardBus Adapter is a key component of the Cisco Structured Wireless-Aware Network (SWAN). Cisco SWAN is a framework to integrate and extend wired and wireless networks to deliver the lowest possible total cost of ownership for companies deploying WLANs. Cisco SWAN extends “wireless awareness” into important elements of the network infrastructure, providing the same level of security, scalability, reliability, ease of deployment, and management for wireless LANs that organizations have come to expect from their wired LANs.

Wireless domain services (WDS) is introduced with the Cisco Structured Wireless-Aware Network. WDS is a collection of Cisco IOS Software features that expand WLAN client mobility, simplify WLAN deployment and management and enhance WLAN security. These services—supported on access points, client devices, and the Cisco Catalyst® 6500 Series Wireless LAN Services Module (WLSM) today and other Cisco LAN switches and routers in 2005—include radio management aggregation, fast secure roaming, client tracking, and WAN link remote site survivability. WDS radio management aggregation supports radio frequency (RF) managed services such as rogue access point detection for WLAN Intrusion Detection System (IDS), interference detection, assisted site surveys and self-healing wireless LANs.

For more information on Cisco SWAN, visit: <http://www.cisco.com/go/swan>.

Fast secure roaming is supported by Cisco and Cisco Compatible client devices in conjunction with Cisco Aironet, Cisco IOS Software-based access points. With fast secure roaming, authenticated client devices can roam securely from one access point to another, within or across subnets, without any perceptible delay during reassociation. Fast secure roaming supports latency-sensitive applications such as wireless voice over IP (VoIP), enterprise resource planning (ERP), or Citrix- based solutions (Figure 3).

Figure 3. Fast Secure Roaming



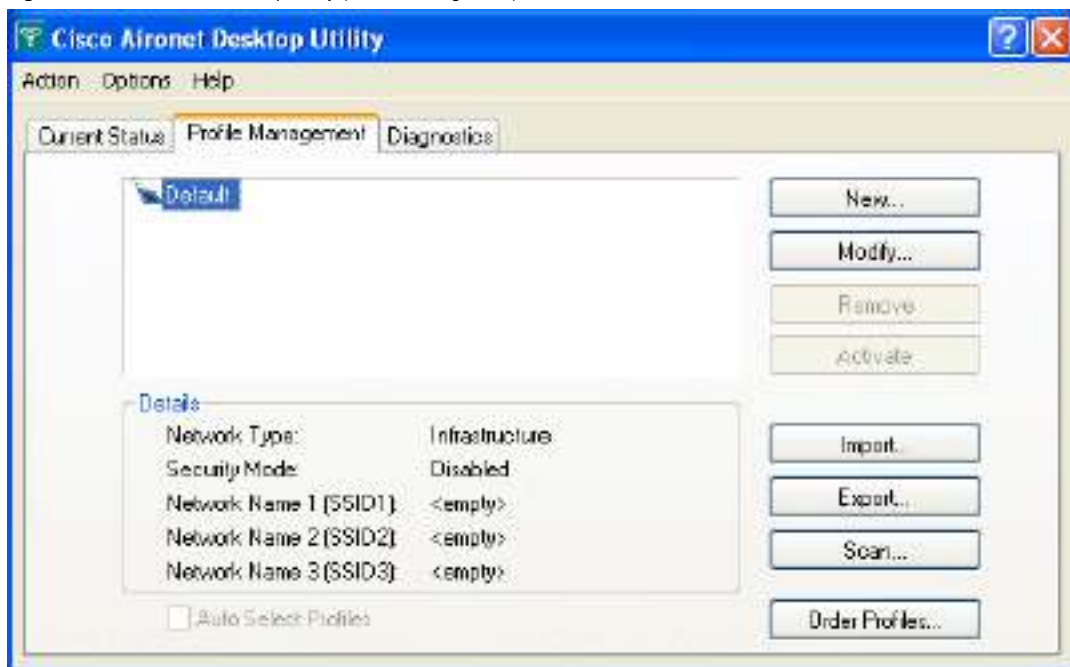
Note: Because the WDS handles roaming and reauthentication, the WAN link is not used

ENHANCED CLIENT NETWORK MANAGEMENT FEATURES

A new and improved set of client utilities includes the Aironet Desktop Utility (ADU), Aironet System Tray Utility (ASTU), and Aironet Client Administration Utility (ACAU). Together, these utilities provide an intuitive graphical user interface (GUI) for easy configuration, monitoring, and management of the Cisco Aironet 802.11a/b/g Cardbus Adapter. Enhanced client network management features include:

- Profile Manager—Allows users to create specific profile settings for various environments, such as the office and home, making it simple for telecommuters and business travelers to move from one environment to another (Figure 4)
- Customized Profile settings—Lets users individually select channel, service set identifier (SSID), Wired Equivalent Privacy (WEP) key, and the authentication method for different locations
- Cisco LEAP authentication status screen—Provides status updates regarding the Cisco LEAP authentication process
- Auto-selection of profiles, including Cisco LEAP profile—Provides automatic selection of established profiles, including Cisco LEAP profile, without requiring storage of the Cisco LEAP username and password in the profile
- System tray icon—Provides easy access to wireless LAN connection information and one-click access to common actions such the manual selection a profile or turning the radio on or off
- Aironet Client Monitor—Provides a subset of ADU features, such as status information about the client adapter and access to basic tasks such as selecting a profile. This application runs from the system tray icon.
- Troubleshooting Utility—Provides step-by-step details on the process of connecting to an access point with highlights on why a connection failed. (Figure 5)
- Support for the most popular enterprise operating systems—Windows XP and Windows 2000

Figure 4. Cisco Aironet Desktop Utility (Profile Management) Screen



An Aironet Client Adapter installation wizard for Windows (CB21AG and PI21AG) is provided for easy installation of the client firmware, drivers, and utilities. The wizard offers several installation offers: install client Utilities and driver; install driver only; or make driver installation diskette(s). For ease of use, the installation wizard image file is a self-extracting (.exe) file.

Figure 5. Troubleshooting Utility Screen

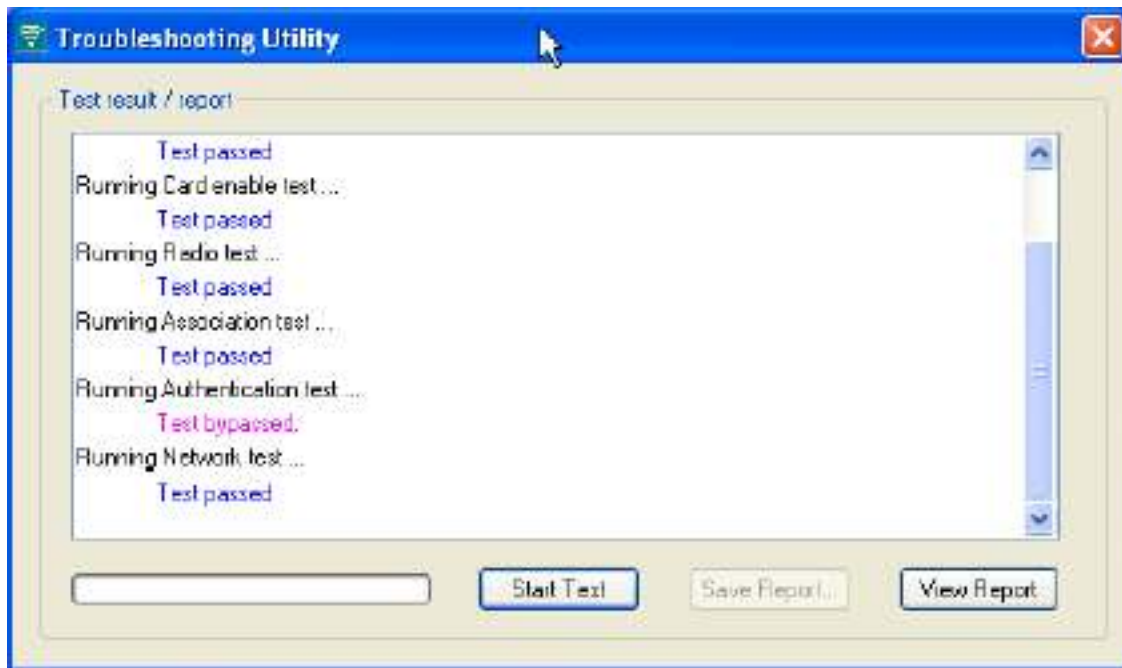


Table 1. Product Features and Benefits

Feature	Benefit
Cisco Wireless Security Suite	IEEE 802.1X support, including Cisco LEAP, PEAP-GTC, PEAP-MSCHAP V2, and EAP-TLS for mutual authentication with dynamic per-user, per-session encryption keys via TKIP enhancements. Full support for WPA. Ready for IEEE 802.11i/WPA2 Advanced Encryption Standard (AES) Support.
Enhanced Client Network Management Features	Bundled with comprehensive, easy-to-use client network management utilities to provide a secure, intuitive, and convenient way to manage and configure the adapter.
Cisco LEAP Single Sign-On	Convenient option to utilize log-in credentials for LEAP sign-on on the user's network, thus eliminating the need to enter a second set of credentials.
Cisco SWAN	A comprehensive Cisco framework to integrate and extend wired and wireless networks to deliver the lowest possible total cost of ownership for companies deploying WLANs. Cisco SWAN extends "wireless awareness" into important elements of the network infrastructure, providing the same level of security, scalability, reliability, ease of deployment, and management for wireless LANs that organizations have come to expect from their wired LANs.
Wireless Domain Services (WDS)	A component of Cisco SWAN, WDS is a collection of Cisco IOS Software features that enhance WLAN client mobility and simplify WLAN deployment and management. WDS includes radio management aggregation, fast secure roaming, client tracking, and WAN link remote site survivability.
Fast Secure Roaming	Allows authenticated client devices to roam securely from one access point to another, within or across subnets, without any perceptible delay during reassociation. Provides support for latency-sensitive applications such as VoIP, ERP and Citrix.

Table 2. Product Specifications

Part Number <ul style="list-style-type: none">• AIR-CB21AG-A-K9• AIR-CB21AG-E-K9• AIR-CB21AG-J-K9• AIR-CB21AG-W-K9• AIR-CB21AG-A-K9-40 (40-unit bulk pack) Regulatory Domains: <ul style="list-style-type: none">• A=Americas• E=ETSI• J=TELEC (Japan)• W=Rest-of-world Customers are responsible for verifying approval for use in their country. Please see http://www.cisco.com/go/aironet/compliance to verify approval and to identify the regulatory domain that corresponds to a particular country.
Form Factor CardBus Type II
Interface <ul style="list-style-type: none">• 32-bit Cardbus with standard 68-pin connector• PC-Card Rev. 7.0 compliant
Data Rates Supported 1, 2, 5.5, 6, 9, 11, 12, 18, 24, 36, 48, 54 Mbps
Network Standard IEEE 802.11a/b/g
Operating Voltage 3.3 V (±0.3 V)
LED Status (green) and Activity (amber)
Media Access Protocol Carrier-Sense Multiple Access w/ Collision Avoidance (CSMA/CA)
Wireless Medium 802.11g: <ul style="list-style-type: none">• Direct Sequence Spread Spectrum (DSSS) and Orthogonal Frequency Divisional Multiplexing (OFDM) 802.11a: <ul style="list-style-type: none">• OFDM

Modulation			
DSSS			
<ul style="list-style-type: none"> Differential Binary Phase Shift Keying (DBPSK) @ 1 Mbps Differential Quadrature Phase Shift Keying (DQPSK) @ 2 Mbps Complementary Code Keying (CCK) @ 5.5 and 11 Mbps 			
OFDM			
<ul style="list-style-type: none"> BPSK @ 6 and 9 Mbps QPSK @ 12 and 18 Mbps 16-Quadrature Amplitude Modulation (QAM) @ 24 and 36 Mbps 64-QAM @ 48 and 54 Mbps 			
Frequency Bands			
<ul style="list-style-type: none"> 2.40 to 2.4897 GHz 5.15 to 5.35 GHz (FCC UNII 1 and UNII 2) 5.725 to 5.85 GHz (FCC UNII 3) 5.15 to 5.35 GHz (ETSI) 5.470 to 5.725 (ETSI) 5.15 to 5.25 GHz (Japan) 			
Delay Spread			
<ul style="list-style-type: none"> 350 ns @ 1 Mbps 300 ns @ 2 Mbps 200 ns @ 5.5 Mbps 400 ns @ 6 Mbps 250 ns @ 9 Mbps 130 ns @ 11 Mbps 		<ul style="list-style-type: none"> 250 ns @ 12 Mbps 220 ns @ 18 Mbps 160 ns @ 24 Mbps 100 ns @ 36 Mbps 90 ns @ 48 Mbps 70 ns @ 54 Mbps 	
Receive Sensitivity 802.11g (typical)			
<ul style="list-style-type: none"> -94 dBm @ 1 Mbps -93 dBm @ 2 Mbps -92 dBm @ 5.5 Mbps -86 dBm @ 6 Mbps -86 dBm @ 9 Mbps -90 dBm @ 11 Mbps 		<ul style="list-style-type: none"> -86 dBm @ 12 Mbps -86 dBm @ 18 Mbps -84 dBm @ 24 Mbps -80 dBm @ 36 Mbps -75 dBm @ 48 Mbps -71 dBm @ 54 Mbps 	
Receive Sensitivity 802.11a (typical)			
5150 to 5250 MHz	5250 to 5350 MHz	5725 to 5805 MHz	5.470 -5.725 GHz
<ul style="list-style-type: none"> -87 dBm @ 6 Mbps -87 dBm @ 9 Mbps -87 dBm @ 12 Mbps -87 dBm @ 18 Mbps -82 dBm @ 24 Mbps -79 dBm @ 36 Mbps -74 dBm @ 48 Mbps -72 dBm @ 54 Mbps 	<ul style="list-style-type: none"> -89 dBm @ 6 Mbps -89 dBm @ 9 Mbps -89 dBm @ 12 Mbps -85 dBm @ 18 Mbps -82 dBm @ 24 Mbps -79 dBm @ 36 Mbps -74 dBm @ 48 Mbps -72 dBm @ 54 Mbps 	<ul style="list-style-type: none"> -84 dBm @ 6 Mbps -84 dBm @ 9 Mbps -84 dBm @ 12 Mbps -83 dBm @ 18 Mbps -82 dBm @ 24 Mbps -79 dBm @ 36 Mbps -72 dBm @ 48 Mbps -65 dBm @ 54 Mbps 	<ul style="list-style-type: none"> -87 dBm @ 6 Mbps -87 dBm @ 9 Mbps -87 dBm @ 12 Mbps -87 dBm @ 18 Mbps -82 dBm @ 24 Mbps -79 dBm @ 36 Mbps -74 dBm @ 48 Mbps -72 dBm @ 54 Mbps

Available Transmit Power Settings

802.11b/g:

- 20 dBm (100 mW) @ 1, 2, 5.5 and 11 Mbps
- 18 dBm (63 mW) @ 1, 2, 5.5, 6, 9, 11, 12, 18 and 24 Mbps
- 17 dBm (50 mW) @ 1, 2, 5.5, 6, 9, 11, 12, 18, 24 and 36 Mbps
- 15 dBm (30 mW) @ 1, 2, 5.5, 6, 9, 11, 12, 18, 24, 36 and 48 Mbps
- 13 dBm (20 mW) @ 1, 2, 5.5, 6, 9, 11, 12, 18, 24, 36, 48 and 54 Mbps
- 10 dBm (10 mW) @ 1, 2, 5.5, 6, 9, 11, 12, 18, 24, 36, 48 and 54 Mbps

802.11a:

- 16 dBm (40 mW) @ 6, 9, 12, 18 and 24 Mbps
- 14 dBm (25 mW) @ 6, 9, 12, 18, 24 and 36 Mbps
- 13 dBm (20 mW) @ 6, 9, 12, 18, 24, 36, 48 and 54 Mbps
- 11 dBm (13 mW) @ 6, 9, 12, 18, 24, 36, 48 and 54 Mbps
- 10 dBm (10 mW) @ 6, 9, 12, 18, 24, 36, 48 and 54 Mbps

Maximum power setting will vary according to individual country regulations.

Power Consumption Steady State

	Transmit	Receive	Standby
802.11a	554 mA maximum	318 mA maximum	203 mA average
802.11b	539 mA maximum	327 mA maximum	203 mA average
802.11g	530 mA maximum	282 mA maximum	203 mA average

Range

(Typical with CB21AG at maximum transmit power communicating with a AP1231AG configured with 2.2 dBi dipole antenna for 802.11g and 802.11b and 6dBi gain patch for 802.11a)

	802.11a	802.11b/g
Indoor (typical)		
54 Mbps	45 ft (13 m)	90 ft (27 m)
18 Mbps	110 ft (33 m)	180 ft (54m)
11 Mbps		160 ft (48 m)
6 Mbps	165 ft (50 m)	300 ft (91 m)
1 Mbps		410 ft (124 m)
Outdoor (typical)		
54 Mbps	100 ft (30 m)	250 ft (76 m)
18 Mbps	600 ft (183 m)	600 ft (183 m)
11 Mbps		1000 ft (304 m)
6 Mbps	1000 ft (304 m)	1300 ft (396 m)
1 Mbps		2000 ft (610 m)

Compliance			
Safety: <ul style="list-style-type: none"> • UL 60950 • CSA 22.2 No. 60950 • IEC 60950 • EN 60950 	Radio Approvals: <ul style="list-style-type: none"> • FCC Part 15.401-15.407 • RSS-210 (Canada) • EN 301.893 (Europe) • ARIB STD-T71 (Japan) • AS 4268.2 (Australia) • FCC Part 15.247 • RSS-210 (Canada) • EN 300.328 (Europe) • Telec 33 and 66 (Japan) • AS/NZS 3548 (Australia and New Zealand) 	EMI and Susceptibility (Class B): <ul style="list-style-type: none"> • FCC Part 15.107 and 15.109 • ICES-003 (Canada) • VCCI (Japan) • EN 301.489-1 and - 17 (Europe) 	Other: <ul style="list-style-type: none"> • IEEE 802.11a, 802.11b and 802.11g • Cisco Compatible Wireless (based on CCX v1.0 and CCX v2.0) • Wi-Fi • WHQL • FCC Bulletin OET-65C • RSS-102
Power Management			
Power management levels available: <ul style="list-style-type: none"> • CAM (Constantly Awake Mode) • Fast PSP (Power Save Mode) • Max PSP (Maximum Power Savings) 			
Antenna			
Integrated diversity dual-band 2.4/5 GHz antenna			
Security Architecture Client Authentication			
Cisco Wireless Security Suite supporting Wi-Fi Protected Access (WPA) including: <p>Authentication:</p> <ul style="list-style-type: none"> • 802.1X support for Cisco LEAP, PEAP-GTC, PEAP-MSCHAPv2, and EAP-TLS • MAC address and by standard 802.11 authentication mechanisms <p>Encryption:</p> <ul style="list-style-type: none"> • Support for static and dynamic IEEE 802.11 WEP keys of 40 bits and 128 bits • TKIP encryption enhancements: key hashing (per-packet keying), message integrity check (MIC) and broadcast key rotation via Cisco TKIP and WPA TKIP 			
Drivers			
Windows XP and Windows 2000			
Dimensions			
2.05 in. (52.08mm) wide x 4.46 in. (113.35mm) deep x 0.19 in. (4.80mm) high			
Weight			
1.6 oz (44.0g)			

Environmental

Non-operating (Storage) Temperature:

- 0°C to +85°C

Operating Temperature:

- 0°C to +70°C

Humidity (non-condensing):

- 1090%

Warranty

One Year

Wi-Fi Certification



Corporate Headquarters

Cisco Systems, Inc.
170 West Tasman Drive
San Jose, CA 95134-1706
USA
www.cisco.com
Tel: 408 526-4000
800 553-NETS (6387)
Fax: 408 526-4100

European Headquarters

Cisco Systems International
BV
Haarlerbergpark
Haarlerbergweg 13-19
1101 CH Amsterdam
The Netherlands
www-europe.cisco.com
Tel: 31 0 20 357 1000
Fax: 31 0 20 357 1100

Americas Headquarters

Cisco Systems, Inc.
170 West Tasman Drive
San Jose, CA 95134-1706
USA
www.cisco.com
Tel: 408 526-7660
Fax: 408 527-0883

Asia Pacific Headquarters

Cisco Systems, Inc.
168 Robinson Road
#28-01 Capital Tower
Singapore 068912
www.cisco.com
Tel: +65 6317 7777
Fax: +65 6317 7799

Cisco Systems has more than 200 offices in the following countries and regions. Addresses, phone numbers, and fax numbers are listed on **the Cisco Web site at www.cisco.com/go/offices.**

Argentina • Australia • Austria • Belgium • Brazil • Bulgaria • Canada • Chile • China PRC • Colombia • Costa Rica • Croatia • Cyprus
Czech Republic • Denmark • Dubai, UAE • Finland • France • Germany • Greece • Hong Kong SAR • Hungary • India • Indonesia • Ireland
Israel • Italy • Japan • Korea • Luxembourg • Malaysia • Mexico • The Netherlands • New Zealand • Norway • Peru • Philippines • Poland
Portugal • Puerto Rico • Romania • Russia • Saudi Arabia • Scotland • Singapore • Slovakia • Slovenia • South Africa • Spain • Sweden
Switzerland • Taiwan • Thailand • Turkey • Ukraine • United Kingdom • United States • Venezuela • Vietnam • Zimbabwe

Copyright © 2004 Cisco Systems, Inc. All rights reserved. CCIP, CCSP, the Cisco *Powered* Network mark, Cisco Unity, Follow Me Browsing, FormShare, and StackWise are trademarks of Cisco Systems, Inc.; Changing the Way We Work, Live, Play, and Learn, and iQuick Study are service marks of Cisco Systems, Inc.; and Aironet, ASIST, BPX, Catalyst, CCDA, CCDP, CCIE, CCNA, CCNP, Cisco, the Cisco Certified Internetwork Expert logo, Cisco IOS, the Cisco IOS logo, Cisco Press, Cisco Systems, Cisco Systems Capital, the Cisco Systems logo, Empowering the Internet Generation, Enterprise/Solver, EtherChannel, EtherSwitch, Fast Step, GigaStack, Internet Quotient, IOS, IP/TV, iQ Expertise, the iQ logo, iQ Net Readiness Scorecard, LightStream, Linksys, MGX, MICA, the Networkers logo, Networking Academy, Network Registrar, *Packet*, PIX, Post-Routing, Pre-Routing, RateMUX, Registrar, ScriptShare, SlideCast, SMARTnet, StrataView Plus, Stratm, SwitchProbe, TeleRouter, The Fastest Way to Increase Your Internet Quotient, TransPath, and VCO are registered trademarks of Cisco Systems, Inc. and/or its affiliates in the United States and certain other countries.

All other trademarks mentioned in this document or Web site are the property of their respective owners. The use of the word partner does not imply a partnership relationship between Cisco and any other company. (0402R)

204113_ETMG_SD_10.04